



j³ PLM Lab

j³ Resources, Inc. maintains current Licenses, Accreditations, Certifications and Registrations with the following organizations:



NVLAP LAB CODE: 200525-0

**ISO / IEC
17025**



Texas Department of State Health Services, Licensed Asbestos and Mold Laboratory

- ◆ **State of Texas**
Historically Underutilized Business Certification and Compliance Program
- ◆ **City of Houston**
Affirmative Action and Contract Compliance Women / Disadvantaged Business Enterprise
- ◆ **Women's Business Enterprise Alliance (WBEA)**
National Council Member
- ◆ **Houston Independent School District (HISD)**
Minority and Women Business Enterprises
- ◆ **Houston Metropolitan Transit Authority**
Small Business Program Certification
- ◆ **Port of Houston Authority**
Registered Small Business Enterprise

j³ Mold Lab



Client References

J³'s services are utilized by a variety of businesses including homeowners, governmental agencies, educational institutions, commercial business organizations, environmental consultants, and professional services firms worldwide. Some current clients include:

- AEA
- CINERGY CORPORATION
- ENGINEERING AND FIRE INVESTIGATIONS
- ENVIRONMENTAL SOLUTIONS, INC.
- ERM SOUTHWEST
- HBC/TERRACON
- HALLIBURTON ENERGY SERVICES, INC.
- HONESTY ENVIRONMENTAL SERVICES
- KELSEY SEYBOLD - EHL
- MD ANDERSON CANCER CENTER
- NASA - JOHNSON SPACE CENTER
- RABA KISTNER CONSULTANTS, INC.
- RHJ & ASSOCIATES
- SHELL GLOBAL SOLUTIONS
- SIEMENS WESTINGHOUSE
- TGE RESOURCES, INC.
- URS CORPORATION

TEXAS SCHOOLS:

- Houston Community College
- Texas A&M University
- Texas Tech University
- University of Houston
- University of St. Thomas
- Aldine ISD
- Cy-Fair ISD
- El Paso ISD
- Fort Bend ISD
- Galena Park ISD
- Houston ISD
- Laredo ISD
- Pasadena ISD
- Spring ISD
- Spring Branch ISD
- Tomball ISD

j³ TEM Lab



Independent
Analytical
Laboratory



Statement of Qualifications

J³ Resources, Inc. is a Texas chartered corporation, established in 2000.

The technical staff of J³ has over 50 years of total laboratory experience to provide high quality, legally defensible independent analytical services.

J³ is open for commercial testing services Monday through Friday from 8am - 5pm. Laboratory personnel are available for emergency testing 24 hours a day/ 7 days a week upon request.



5400 Mitchelldale Street, Suite A9
Houston, TX 77092
(713) 290-0221
Toll free: (866) 290-0221
Fax: (713) 290-0248
www.j3resources.com

MasterCard and
VISA accepted

01/2005

J³ Resources, Inc.

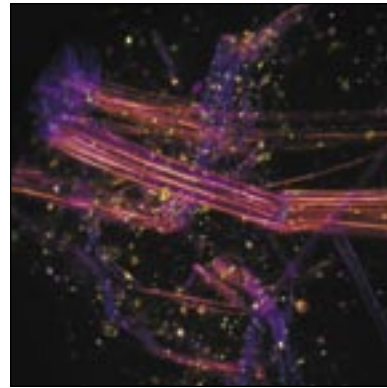
is a privately
owned and operated
commercial laboratory
specializing
in the analysis of
air quality and
surface contaminants
including

**Asbestos,
Mold &
Lead.**

J³ is proud of its
reputation for providing
an exceptional level
of service
to a diverse client base
ranging from
single family residences to
global consulting and
engineering firms.



Chrysotile
Asbestos - PLM



Asbestos Fibers - PLM

Asbestos

Air - PCM and TEM Analysis

Water - TEM Analysis

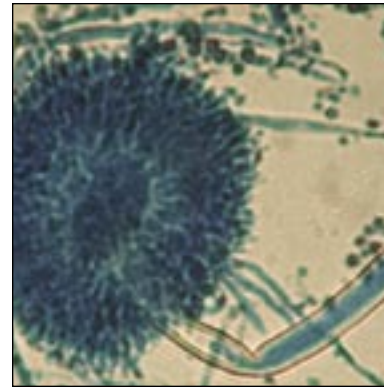
Bulk - PLM and TEM Analysis

TEM Analysis:
(Transmission Electron Microscopy)
AHERA (40 CFR, Part 763, Subpart E)
NIOSH 7402 Issue 2
EPA Level II
Chatfield/NOB Analysis
Microvac (ASTM D 5755-95)
Water (EPA 100.2)

PLM Analysis:
(Polarized Light Microscopy)
EPA 600/R-93/116
EPA 600/M4-82-020

PCM Analysis:
(Phase Contrast Microscopy)
NIOSH 7400(A)

Asbestos Mold Lead



Aspergillus sp.

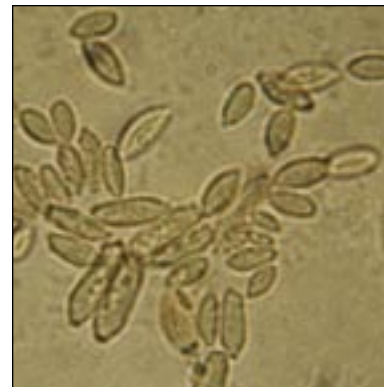
Mold

Air

- Viable (Anderson)
- Non-Viable (Spore Traps)

Bulk

- Direct Examination (Tape Lift, Swabs, Building Materials)
- Culture Plates (Swabs, Contacts, Building Materials)



Cladosporium sp.

Asbestos Mold Lead



J³ Lead Lab

Lead

Air - FAA Analysis

Water - FAA and GFAA Analysis

Bulk - FAA Analysis

FAA Analysis:
(Flame Atomic Absorption)
Method 7420/3050A
NIOSH 7082/9100
Paint
Dust (Wipes)
Soil
Effluent
Air

GFAA Analysis:
(Graphite Furnace Atomic Absorption)
Method 7421/3050A
NIOSH 7105
Drinking Water
Air
Effluent

TCLP Analysis:
(Toxicity Characteristic Leaching
Procedure)
Method 1311
Soil
Debris

Asbestos Mold Lead